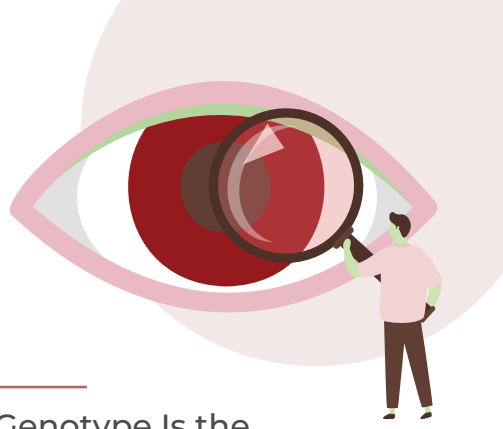




PRIME PATH LAB

# INHERITED RETINAL & OPTIC DISORDERS GENOMIC PANEL



One Sample. The Whole Eye. The Genotype Is the Treatment Plan.

Inherited eye disease overlaps so heavily on exam that imaging alone often cannot name it. A molecular diagnosis defines the disease, fixes the inheritance pattern, and increasingly determines the therapy.

## Why physicians order it



The genotype is the treatment plan

Gene therapy already exists for inherited retinal disease, with more in trials.



It resolves the look-alikes

Separates conditions that share an identical fundus but a different future.



It uncovers hidden systemic disease

Flags the hearing, renal, or neurologic involvement riding with the eye.

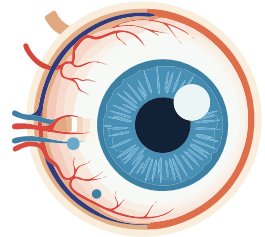
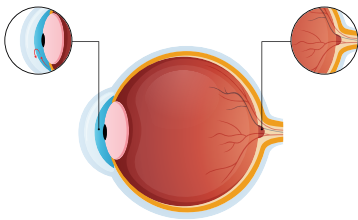


It's a family diagnosis

Confirms inheritance and guides reproductive and cascade testing.

## Therapy spotlight

A confirmed RPE65 result identifies candidates for voretigene neparvovec an approved gene therapy that restores functional vision in Leber congenital amaurosis. RPGR-targeted therapy is in advanced trials. No genotype, no eligibility — and these therapies work best while photoreceptors survive.

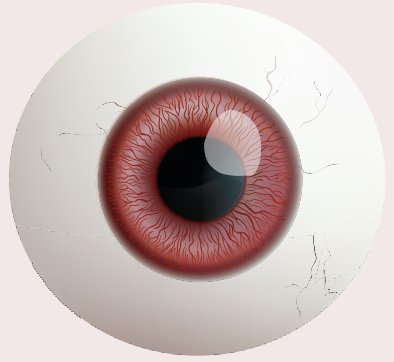


## Leads with the clinical reality

The eye is one organ, but inherited disease writes itself across dozens of genes and dozens of presentations. This panel reads the entire genetic landscape — from the retina to the optic nerve, from infancy to adulthood so no matter where the disease begins, the molecular answer is within reach.

## Who to test

- ✓ Progressive night blindness with field loss and pigmentary retinopathy.
- ✓ Macular atrophy, flecks, or a cone / cone-rod ERG abnormality.
- ✓ Progressive night blindness with field loss and pigmentary retinopathy.
- ✓ Retinal disease with hearing loss, obesity, polydactyly, or renal anomaly.
- ✓ Early-onset glaucoma, congenital cataract, corneal dystrophy, or hereditary optic neuropathy.
- ✓ Family history, or evaluation for gene-directed therapy or trial eligibility.



## What sets this panel apart



### Whole-eye coverage

Retina, macula, glaucoma, cataract, cornea, and optic nerve in one test.



### Modular

Order a targeted sub-panel, or test comprehensively when the phenotype is ambiguous.



### Therapy-aware

Identifies candidates for approved gene therapy and active clinical trials.



### Non-invasive

A simple buccal swab no blood draw required.

Test at first suspicion gene-directed therapy depends on surviving photoreceptors.

CONTACT & ORDERING INFORMATION

**PRIME PATH LAB**



[primepathlabsinc@gmail.com](mailto:primepathlabsinc@gmail.com)



6000 E Evans Ave, STE 3-014 Denver, CO 80222